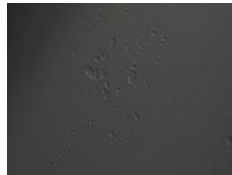


### Decors:

smooth formwork grey  
120smooth form. anthracite  
121timber formwork  
122Vintage light  
223Vintage standard  
224Vintage anthracite  
226

### Surface finish:

The upper side of the **imi-beton** composite board consists of a flexible, mineral **imi-beton** coating with a thickness of approx. 1mm. The **imi-beton** surfaces are factory-finished with a water-based 2K acrylic lacquer and therefore to be treated like normal veneered, lacquered surfaces. They are an ideal solution for vertical applications such as furniture fronts or wall panelling. For use as a horizontal surface, such as a worktop or tabletop, we would like to refer you to our technical data sheet on our **imi-plus** surface for hygienic reasons: **imi-plus** - Technical data sheet. Basically, our **imi-beton** surfaces can also be lacquered again with an additional water-based 2-component acrylic lacquer for higher stresses (e.g. stair treads, floor coverings, etc.). We recommend a compatibility test of the lacquer to be used on a sample or residual piece.

### Cleaning and care:

The **imi-beton** surface is cleaned as needed in daily or longer intervals. Loose dirt can be removed with a damp cloth. In the case of heavy soiling with adhering dirt, the **imi-beton** surface can be effectively cleaned with a little washing-up liquid.

### Stain removal:

All stain-forming and aggressive substances must be removed from the **imi-beton** surface immediately. Scouring agents, sanitary cleaners, acids or strong solvents can damage the surface of the covering or furnishings. In addition, rubbing and scouring can cause changes in the level of gloss. When treating stains with cleaning agents or stain removers, a material compatibility test must be carried out on an inconspicuous area or on an unglued covering sample first. The instructions and regulations of the cleaning agent manufacturers must be observed.

### General Information:

Although the mineral **imi-beton** coating is resistant, a suitable base (e.g. trivet) should be used when exposed to high heat. In addition, no sharp objects (e.g. knives) should be used directly on the surface and care should also be taken to use a suitable base (e.g. chopping board).

### Disposal:

Private disposal: Possible with wood and wood-based materials as bulky waste.

Commercial disposal: Waste code number AVV 170201

Information is provided according to our best knowledge. The contents are, however, not legally binding. The user is not released from verifying that the materials are suitable for the intended purpose. Technical changes reserved. The main component of the mineral imi coating is organic so that colour shadings between different lots can not be excluded completely. Samples of these materials only show the general appearance and cannot unite the characteristics like colour, texture and structure. Differences of any kind, as well as air inclusions, are natural and no reason for claim. Low distortion as well as little displacements in the joint area and minor gap formation cannot be fully excluded.